

# W BOTHELL



## DISCOVER THE POSSIBILITIES

AT UNIVERSITY OF WASHINGTON BOTHELL



# GET TO KNOW US

## ONE UW

As a Husky at UW Bothell, you'll have access to resources on all three UW campuses and earn the same UW degree.



## BE THE FIRST

Approximately **41%** of our incoming students at UW Bothell will be the first in their families to earn a four-year degree.

## RATIO

Average UW Bothell class size of **29**

**17:1** student-to-faculty ratio



Ready to see yourself at UW Bothell? Sign up for a campus visit at [uwb.edu/admissions/visit](https://uwb.edu/admissions/visit).

# COMMUNITY PARTNERS

Our students have collaborated with more than 400 top businesses, nonprofits and government agencies in Washington on various projects. Find out more through our Office of Community-Engaged Learning & Research at [uwb.edu/connected-learning](http://uwb.edu/connected-learning).



## BUSINESS

- Amazon
- Equinix
- Jamco America, Inc.



## NONPROFIT

- NAMI: National Alliance on Mental Illness
- WABS: Washington Alliance for Better Schools
- Forterra - Land for Good



## GOVERNMENT

- Washington State Parks
- Public Health – Seattle & King County
- EERC: Environmental Education and Research Center

## DEBT FREE

More than **65%** of our undergraduate and graduate students complete their degrees debt-free.

## EARNINGS

The wages of UW Bothell alumni with bachelor degrees are consistently the second highest of all public institutions in the state.

Source: Office of Financial Aid & Scholarships (2021-2022) and Educational Research & Data Center (2021)

Discover what makes UW Bothell unique at [uwb.edu/about](http://uwb.edu/about).

# FIND YOUR PLACE



Student-centered,  
right-sized campus

Large university  
resources  
with a small  
community feel

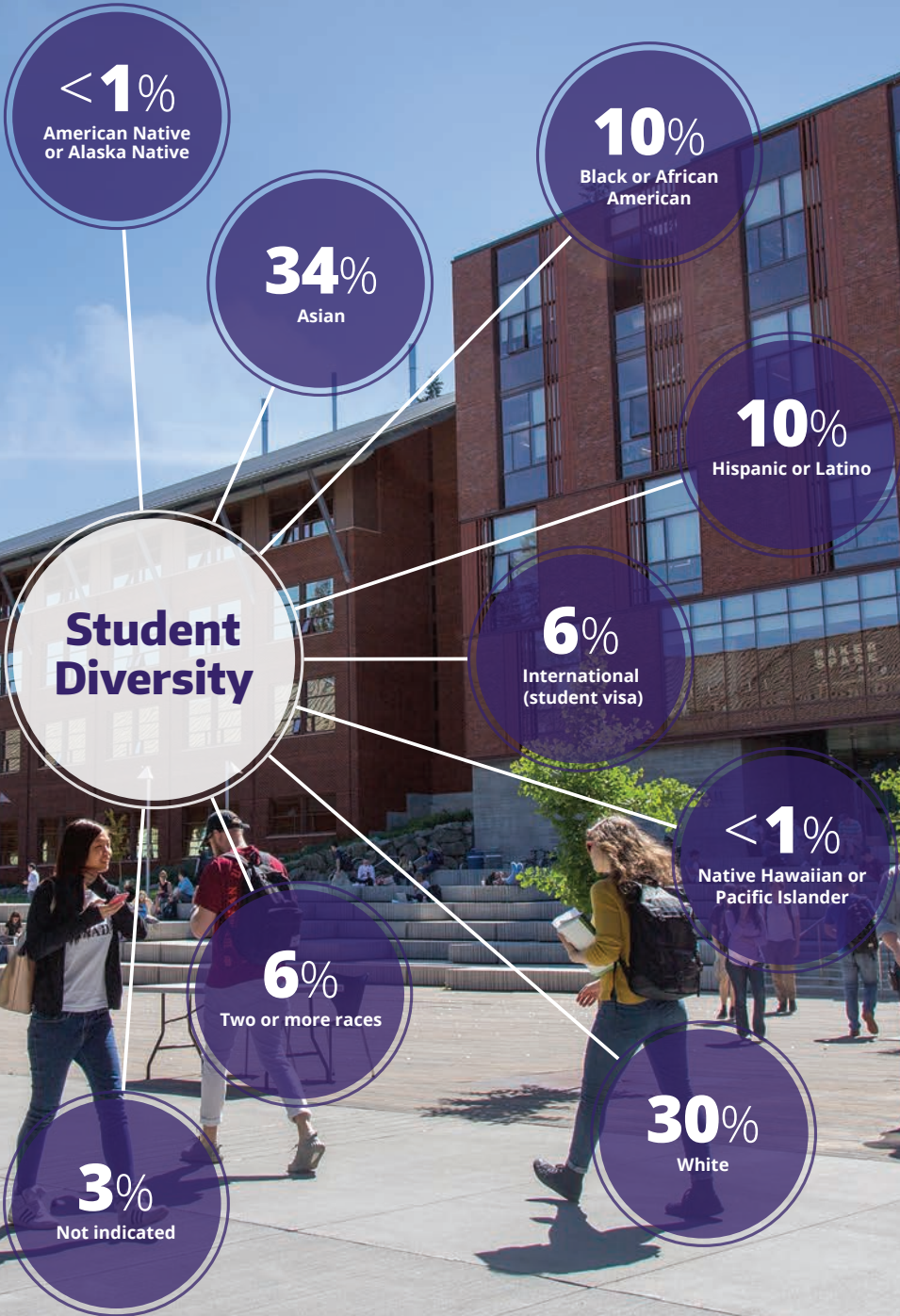
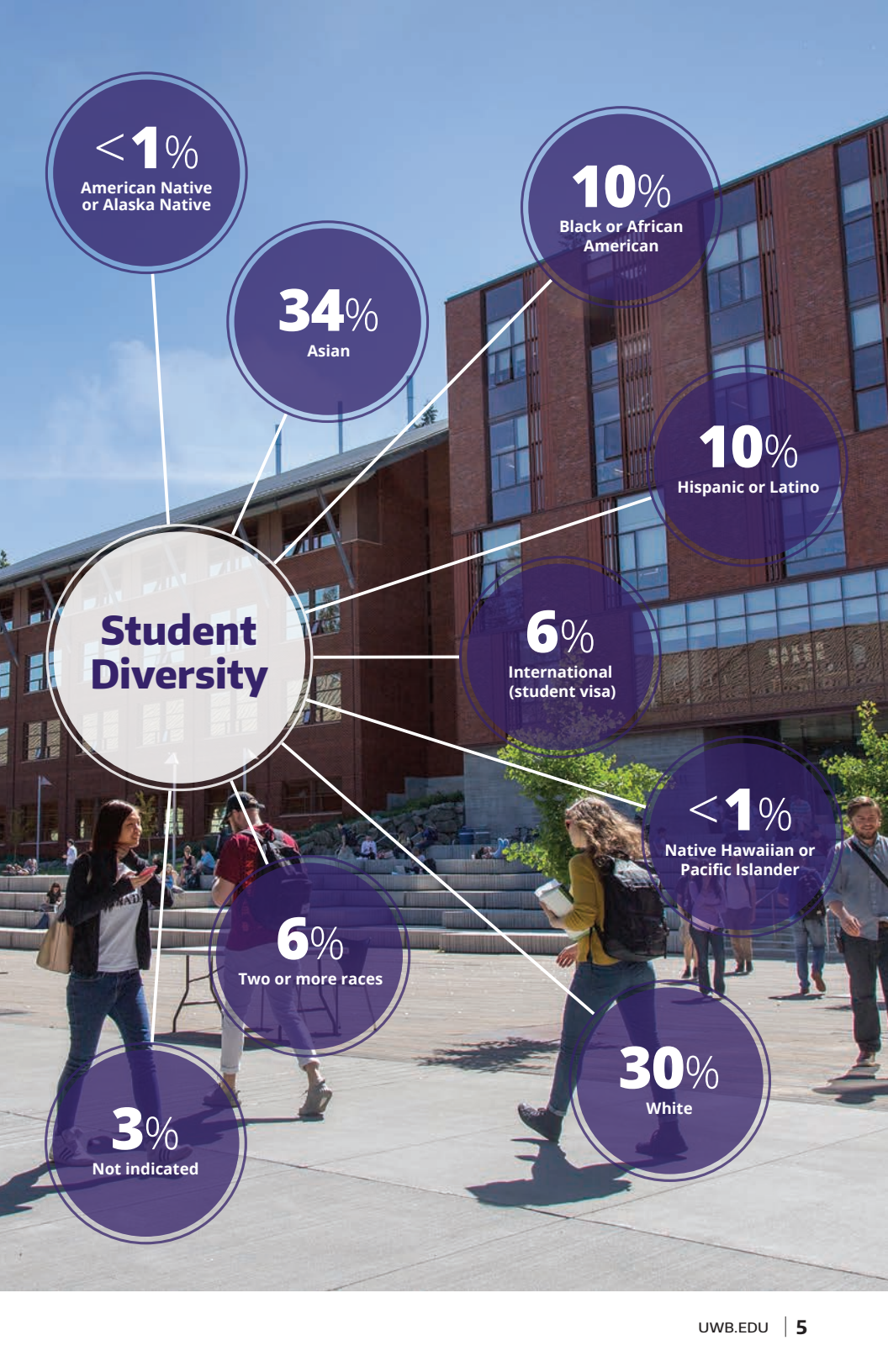


## UW BOTHELL CAMPUS PROFILE

**5,750+**  
STUDENTS

**350+**  
FACULTY

**5**  
SCHOOLS



# OUR PROGRAMS

## MAJORS

- > American & Ethnic Studies (BA)
- > Applied Computing (BA)
- > Biology (BS)
- > Business Administration (BA) Bellevue Campus
- > Business Administration (BA) Bothell Campus
- > Chemistry (BA)
- > Chemistry (BS – With a biochemistry option)
- > Chemistry (BS)
- > Computer Engineering (BS)
- > Computer Science & Software Engineering (BS)
- > Conservation & Restoration Science (BS)
- > Culture, Literature & the Arts (BA)
- > Earth System Science (BS)
- > Educational Studies (BA - With an elementary education option)
- > Electrical Engineering (BS)
- > Environmental Studies (BA)
- > Gender, Women & Sexuality Studies (BA)
- > Global Studies (BA)
- > Health Studies (BA)
- > Interdisciplinary Arts (BA)
- > Interdisciplinary Studies (BA - With a social science option)
- > Law, Economics & Public Policy (BA)
- > Mathematical Thinking & Visualization (BA)
- > Mathematics (BS)
- > Mechanical Engineering (BS)
- > Media & Communication Studies (BA)
- > Nursing (BS), RN to BSN (transfer entry)
- > Physics (BA)
- > Physics (BS)
- > Psychology (BA)
- > Science, Technology & Society (BA)

(BA) = Bachelor of Arts, (BS) = Bachelor of Science

## MINORS

- > Actuarial Science
- > Business Administration
- > Biology
- > Chemistry
- > Computer Science & Software Engineering
- > Creative Writing
- > Data Science
- > Diversity Studies
- > Ecological Restoration
- > Economics
- > Education & Society
- > Gender, Women & Sexuality Studies
- > Global Health
- > Geographic Information Systems (GIS)
- > Health Education & Promotion
- > Health Studies
- > Human Rights
- > Information Technology
- > Marine Biology
- > Mathematics
- > Neuroscience
- > Performance
- > Physics
- > Policy Studies
- > Retail Management
- > Science, Technology & Society
- > Teaching & Learning
- > Visual & Media Arts

Browse the list of available degree programs at  
**[uwb.edu/degrees](http://uwb.edu/degrees)**.

# META-MAJOR PATHWAYS

Having trouble choosing a major that's right for you? Meta-Major Pathways are intended to help you find where you want to make a difference, visualize a path and plan a course of action.

## What interests you most?



ARTS & MEDIA



BUSINESS & POLICY



EDUCATION & SOCIETY



HEALTH & NATURAL SCIENCES



TECHNOLOGY & ENGINEERING

Explore, discover, connect and engage with Meta-Major Pathways at [uwb.edu/premajor/pre-major-students/meta-major-pathways](https://uwb.edu/premajor/pre-major-students/meta-major-pathways).

# CAMPUS LIFE

**THERE ARE MORE THAN 100 STUDENT ORGANIZATIONS**  
on campus. Where will you make your mark?

- Association for Computing Machinery
- Black Student Union
- Bothell Women in Science and Engineering
- Filipino American Student Association
- Finance Club
- Helping Hands Project
- Husky Game Dev
- Muslim Student Association
- Pre-Med Club
- Pride Alliance
- Trickfire Robotics
- *A new club of your own making?*

**STUDENT ENGAGEMENT & ACTIVITIES SPONSORS SEVERAL ANNUAL EVENTS,** including those created by students. As a student, you can look forward to leading and participating.

## WELCOME WEEK

A week-long event filled with fun programs and activities for incoming students to connect with peers and resources!

## SPRING FEST

The biggest event of the year, Spring Fest includes an assortment of carnival games on the sports field as well as arts, crafts and even a petting zoo.

Food and music are always a part of the action, too.



Create your own campus experience and get involved!  
Find more ways to connect at [uwb.edu/sea](http://uwb.edu/sea).



# RESIDENTIAL VILLAGE

Build your new home at UW Bothell's newest luxury student housing community. Brand new living spaces, dining opportunities, amenities and more. Explore the on-campus living opportunities at [uwb.edu/campus-living](http://uwb.edu/campus-living).



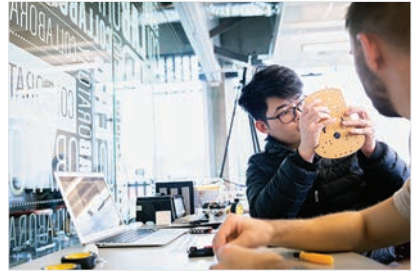
# STUDENT SPACES



## The ARC – Activities & Recreation Center

The ARC is a hub for student life on campus — a place for students to gather, socialize, dine and exercise.

Learn more about the ARC at [uwb.edu/arc](http://uwb.edu/arc).



## The Collaboratory

The Collaboratory is an open and creative space that provides equipment, materials and training needed for academic and personal projects.

Learn more about the Collaboratory at [uwb.edu/connected-learning/collaboratory](http://uwb.edu/connected-learning/collaboratory).

# HOW TO APPLY

## FIRST-YEAR APPLICANTS

### APPLICATION CHECKLIST

- ✔ Confirm you meet our **Academic Requirements**
  - Completion of College Academic Distribution Requirements (CADRs)
  - Minimum cumulative GPA of 2.0
- ✔ Prepare your **Personal Essay, Writing Supplement, and Activities Statement**
- ✔ Fill out and submit your **Application**
- ✔ Check your **Application Portal**

### IMPORTANT DEADLINES

Early Action Deadline: **November 15**

Regular Decision Deadline: **January 15**

**NOTE TO ALL:** Students who spend more than half of their education (generally more than seven years) outside the United States will need to demonstrate English Language Proficiency.

Apply at [uwb.edu/admissions/apply/first-year](https://uwb.edu/admissions/apply/first-year).

# TRANSFER STUDENTS

## APPLICATION CHECKLIST

- ✓ Use our **Transfer Planning Worksheets** at [uwb.edu/admissions/apply/transfer/transfer-planning-worksheets](http://uwb.edu/admissions/apply/transfer/transfer-planning-worksheets)
- ✓ Review our **Transfer Credit Policies**
- ✓ Prepare your **Personal Statement**
- ✓ Request Official **Transcripts and Test Scores**
- ✓ Fill out and submit your **Application**
- ✓ Check your **Application Portal**

## IMPORTANT DEADLINES

Application deadlines can vary by program. Transfer students should verify deadlines at [uwb.edu/admissions/apply/application-dates-deadlines](http://uwb.edu/admissions/apply/application-dates-deadlines).

**NOTE TO ALL:** Students who spend more than half of their education (generally more than seven years) outside the United States will need to demonstrate English Language Proficiency.

Apply at [uwb.edu/admissions/apply/transfer](http://uwb.edu/admissions/apply/transfer).

# FINANCIAL AID

## FAFSA

The Free Application for Federal Student Aid is available to all U.S. citizens and eligible non-citizens (permanent residents).

[studentaid.gov/h/apply-for-aid/fafsa](https://studentaid.gov/h/apply-for-aid/fafsa)

## WASFA

The Washington Application for State Financial Aid is available to Washington residents who are not eligible to submit the FAFSA.

[wsac.wa.gov/wasfa](https://wsac.wa.gov/wasfa)

## HUSKY PROMISE

The Husky Promise guarantees full tuition and standard fees for eligible Washington residents.

[washington.edu/huskypromise](https://washington.edu/huskypromise)

## Priority Filing Date: February 28

Be sure to include our federal school code below. The code is shared by all three UW campuses.

**UW Federal Code 003798**

Need additional assistance with financial aid? Learn more at [uwb.edu/financial-aid](https://uwb.edu/financial-aid).



# COST OF EDUCATION

\*Estimated

RESIDENT  
TUITION

**\$12,559**

NON-RESIDENT  
TUITION

**\$41,913**

## ANNUAL STUDENT BUDGET

PERSONAL  
EXPENSES

**\$2,508**

NEW  
STUDENT FEE

**\$370**

HOUSING & MEAL  
PLAN

**\$17,115**

BOOKS AND  
SUPPLIES

**\$900**

TRANSPORTATION

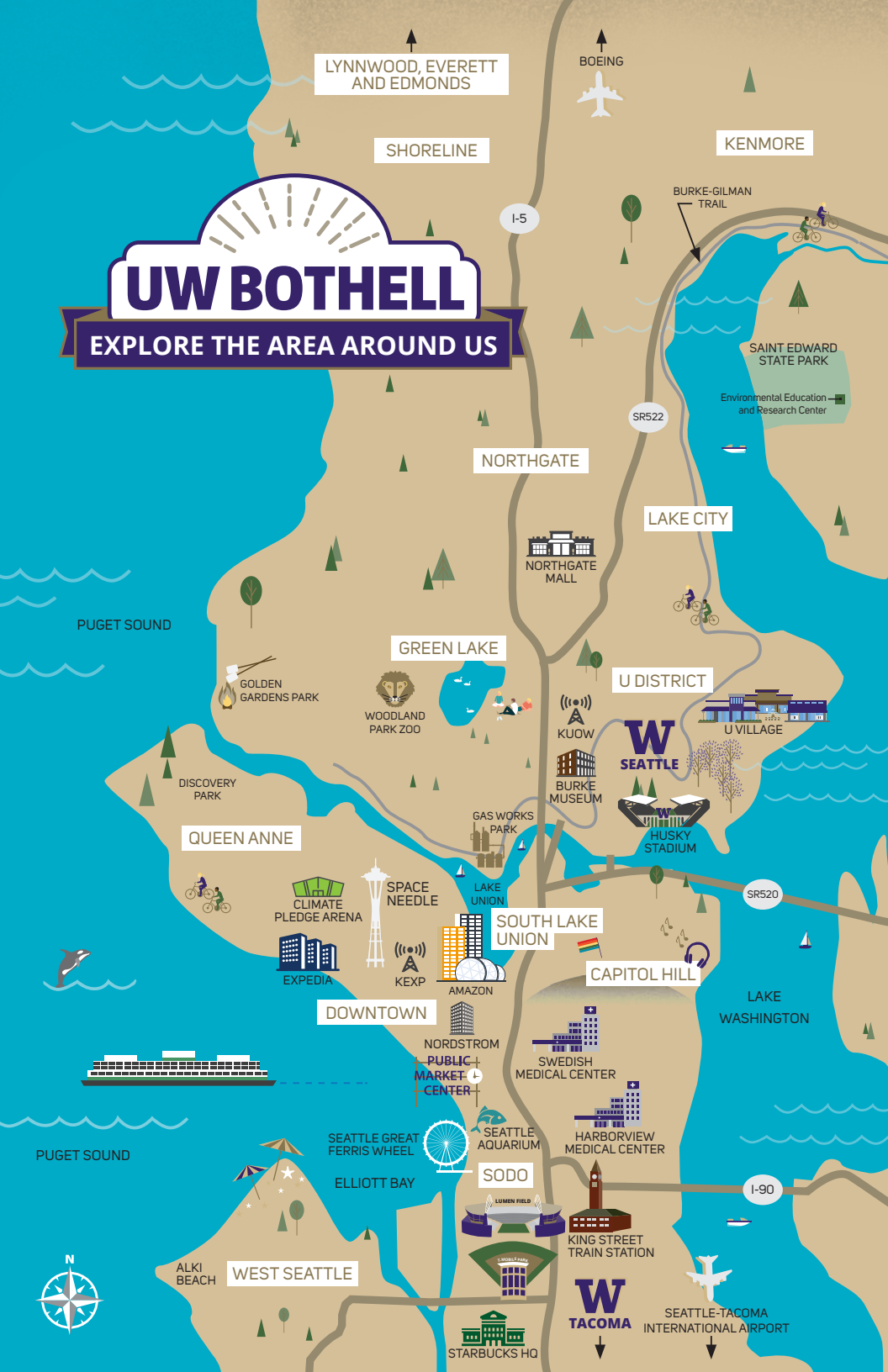
**\$1,602**

\*Tuition and fees subject to change annually; international students subject to additional fees.

Learn more about the cost breakdown at  
[uwb.edu/catalog/tuition-fees-financial-aid](http://uwb.edu/catalog/tuition-fees-financial-aid).

# UW BOTHELL

EXPLORE THE AREA AROUND US



LYNNWOOD, EVERETT  
AND EDMONDS

BOEING

SHORELINE

KENMORE

I-5

BURKE-GILMAN  
TRAIL

SAINT EDWARD  
STATE PARK

Environmental Education  
and Research Center

NORTHGATE

LAKE CITY

PUGET SOUND

NORTHGATE  
MALL

GREEN LAKE

U DISTRICT

QUEEN ANNE

GOLDEN  
GARDENS PARK

WOODLAND  
PARK ZOO

KUOW  
BURKE MUSEUM

W  
SEATTLE

U VILLAGE

DISCOVERY  
PARK

GAS WORKS  
PARK

W  
SEATTLE  
HUSKY STADIUM

SPACE NEEDLE

CLIMATE  
PLEDGE ARENA

LAKE UNION

SOUTH LAKE  
UNION

EXPEDIA

KEXP

AMAZON

CAPITOL HILL

SR520

DOWNTOWN

NORDSTROM  
PUBLIC  
MARKET  
CENTER

SWEDISH  
MEDICAL CENTER

LAKE  
WASHINGTON

PUGET SOUND

SEATTLE GREAT  
FERRIS WHEEL

SEATTLE  
AQUARIUM

HARBORVIEW  
MEDICAL CENTER

ELLIOTT BAY

SODO

I-90



ALKI  
BEACH

WEST SEATTLE

STARBUCKS HQ

W  
TACOMA

SEATTLE-TACOMA  
INTERNATIONAL AIRPORT



# UW BOTHELL CAMPUS

▶ **SCHEDULE A  
CAMPUS VISIT:**

We offer info sessions, tours and more all throughout the year. Register today at [uwb.edu/admissions/visit](http://uwb.edu/admissions/visit).

Can't visit campus? Check out our virtual tour at [uwb.edu/admissions/visit/virtual-tour](http://uwb.edu/admissions/visit/virtual-tour).

▶ **MEET YOUR  
ADMISSIONS  
COUNSELOR:**

Schedule an in-person, virtual or phone appointment with your counselor to discuss your major of interest, prerequisites and the application process.

Connect with us at [uwb.edu/admissions/contact](http://uwb.edu/admissions/contact).

▶ **REQUEST MORE  
INFORMATION:**

Create your own custom viewbook and get the most recent information about UW Bothell at [customviewbook.uwb.edu/discover](http://customviewbook.uwb.edu/discover).

**OFFICE OF ADMISSIONS**

Summit Hall  
18612 Beardslee Blvd  
Suite 100  
Bothell, WA 98011

Office hours:  
Monday through Friday, 9 a.m. to 4 p.m.  
Phone: 425.352.5000  
Text: 425.659.2920  
Email: [uwbinfo@uw.edu](mailto:uwbinfo@uw.edu)



**READY TO ASK, LEARN  
AND SEE MORE?**

Sign up for a campus visit:  
[uwb.edu/admissions/visit](http://uwb.edu/admissions/visit)

The University of Washington is committed to providing equal opportunity and reasonable accommodation in its services, programs, activities, education and employment for individuals with disabilities. To request disability accommodations, please contact Disability Resources for Students at 425.352.5307, TDD 425.352.5303, FAX 425.352.3581, or email [uwb-drs@uw.edu](mailto:uwb-drs@uw.edu).