

## Part 7. Maps

Map 1: Vicinity map of Big Finn Hill Park and surrounding area.

Map 2: Existing trails on the east side of the park.

Map 3: Proposed trail improvements on the east side of the park.

Map 4: Existing trails on the west side of the park.

Map 5: Proposed trail improvements on the west side of the park.

# Map 1: Big Finn Hill Park and Vicinity

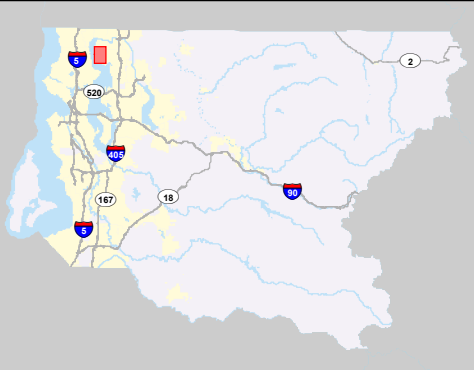
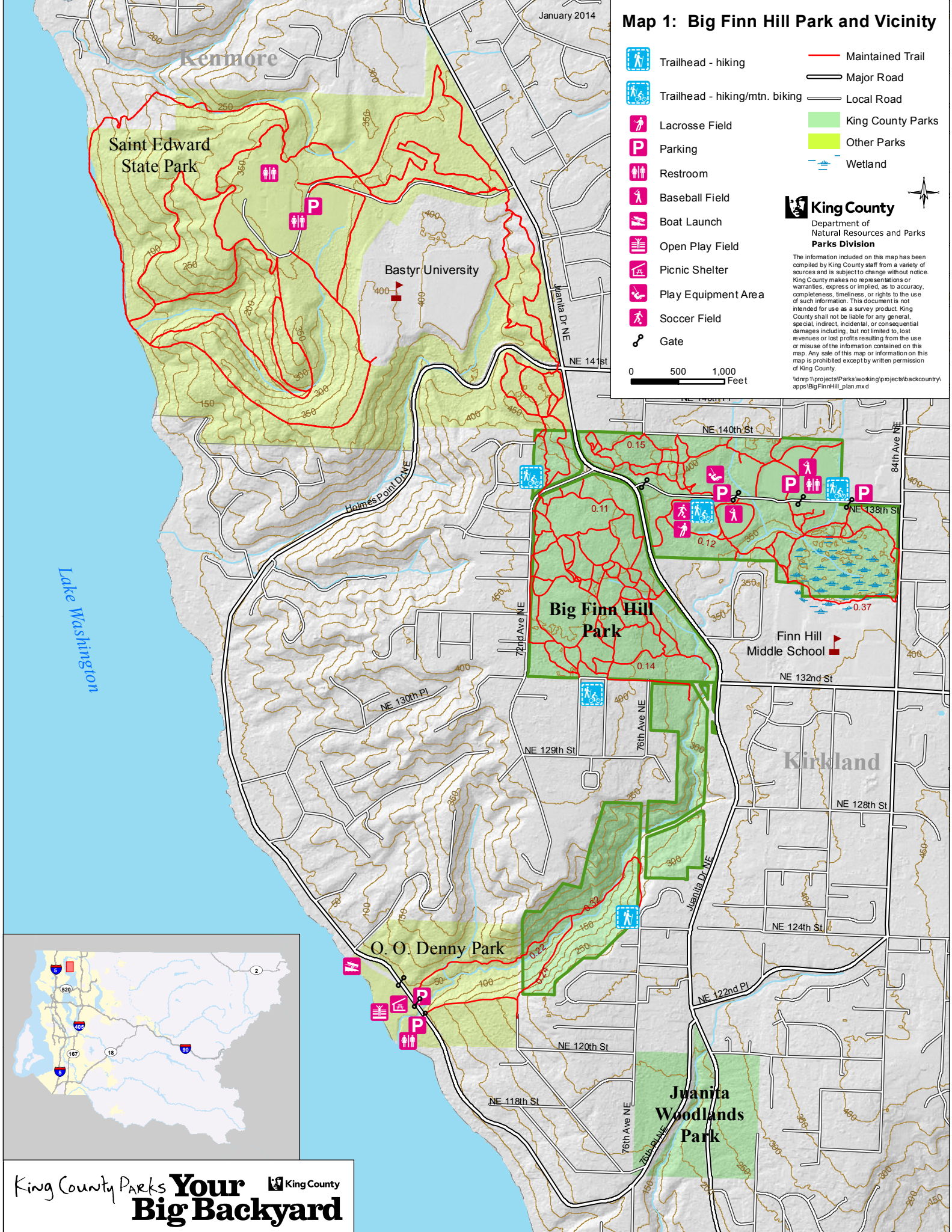
	Trailhead - hiking		Maintained Trail
	Trailhead - hiking/mtn. biking		Major Road
	Lacrosse Field		Local Road
	Parking		King County Parks
	Restroom		Other Parks
	Baseball Field		Wetland
	Boat Launch		
	Open Play Field		
	Picnic Shelter		
	Play Equipment Area		
	Soccer Field		
	Gate		

**King County**  
Department of Natural Resources and Parks  
**Parks Division**





The information included on this map has been compiled by King County staff from a variety of sources and is subject to change without notice. King County makes no representations or warranties, express or implied, as to accuracy, completeness, timeliness, or rights to the use of such information. This document is not intended for use as a survey product. King County shall not be liable for any general, special, indirect, incidental, or consequential damages including, but not limited to, lost revenues or lost profits resulting from the use or misuse of the information contained on this map. Any sale of this map or information on this map is prohibited except by written permission of King County.


\\dnr\p\projects\Parks\working\projects\backcountry\apps\BigFinnHill\_plan.mxd

0 500 1,000 Feet



# Map 2: Big Finn Hill Park East Existing

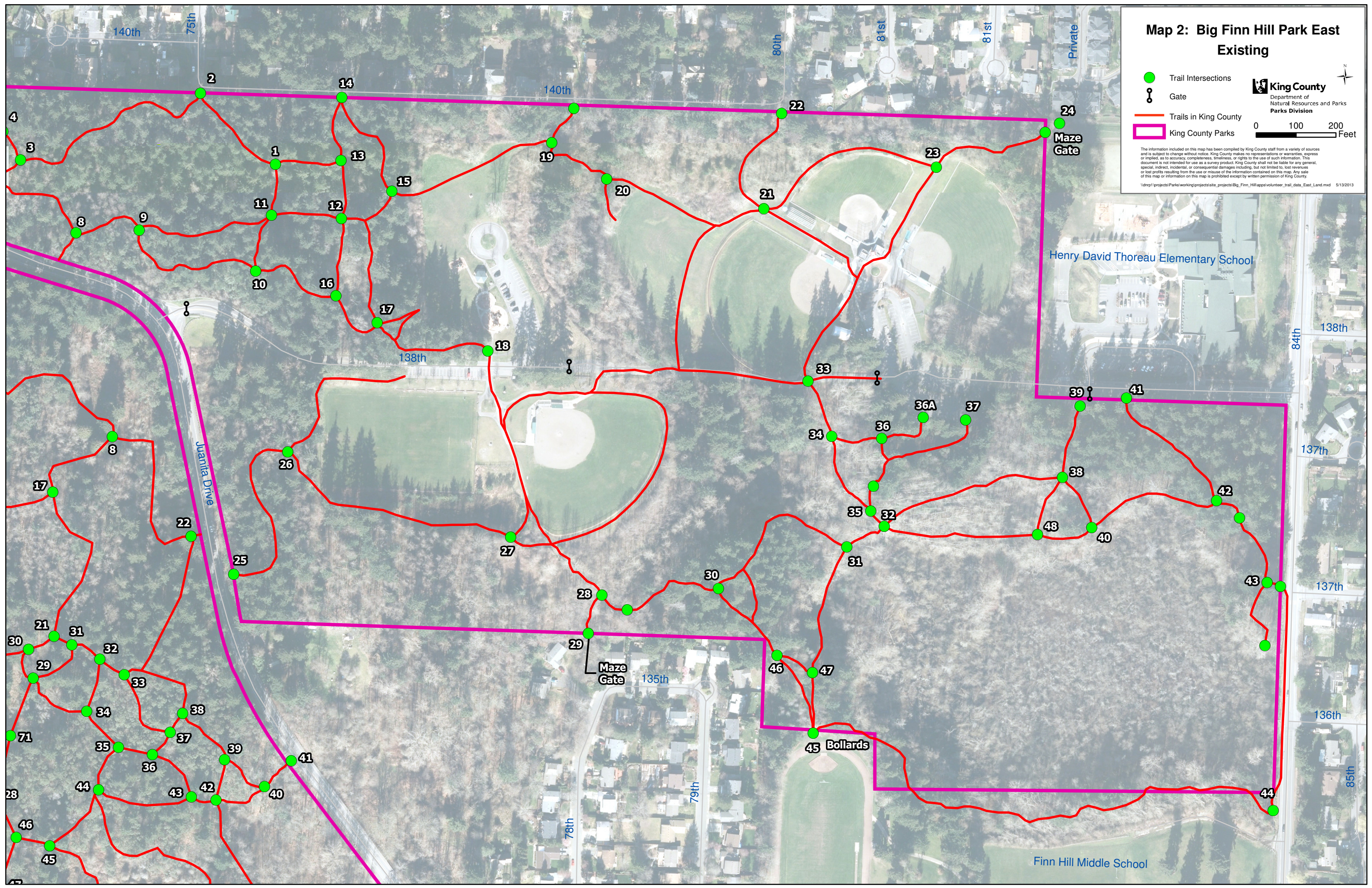
 Trail Intersections  
 Gate  
 Trails in King County  
 King County Parks

 **King County**  
Department of Natural Resources and Parks  
Parks Division

0 100 200 Feet

The information included on this map has been compiled by King County staff from a variety of sources and is subject to change without notice. King County makes no representations or warranties, express or implied, as to accuracy, completeness, timeliness, or rights to the use of such information. This document is not intended for use as a survey product. King County shall not be liable for any general, special, indirect, incidental, or consequential damages including, but not limited to, lost revenues or lost profits resulting from the use or misuse of the information contained on this map. Any sale of this map or information on this map is prohibited except by written permission of King County.

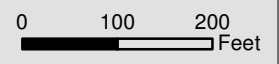
\\drp1\projects\Parks\working\projects\site\_projects\Big\_Finn\_Hill\apps\volunteer\_trail\_data\_East\_Land.mxd 5/13/2013



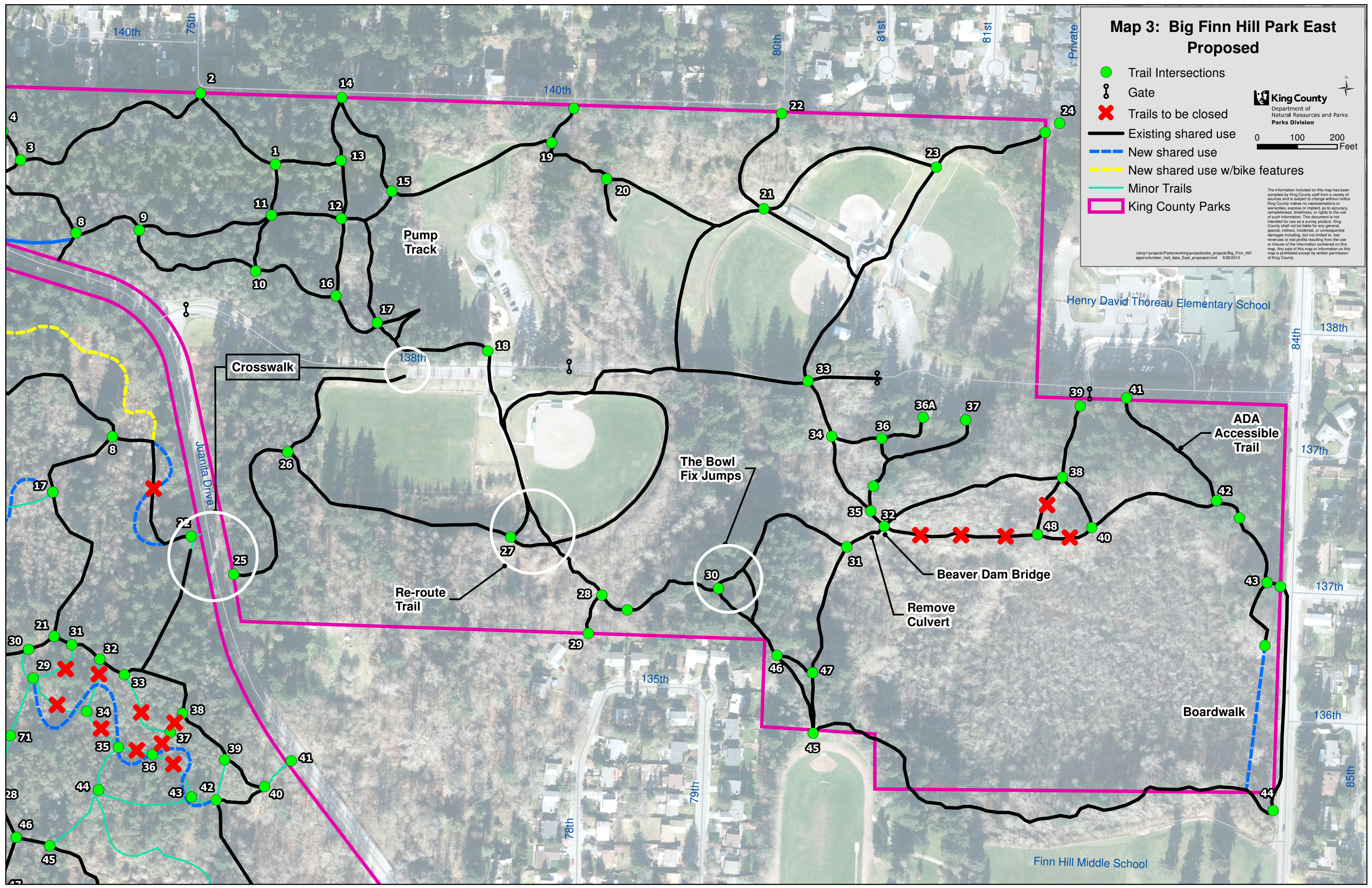
# Map 3: Big Finn Hill Park East Proposed



- Trail Intersections
- Gate
- ✗ Trails to be closed
- Existing shared use
- New shared use
- New shared use w/bike features
- Minor Trails
- King County Parks

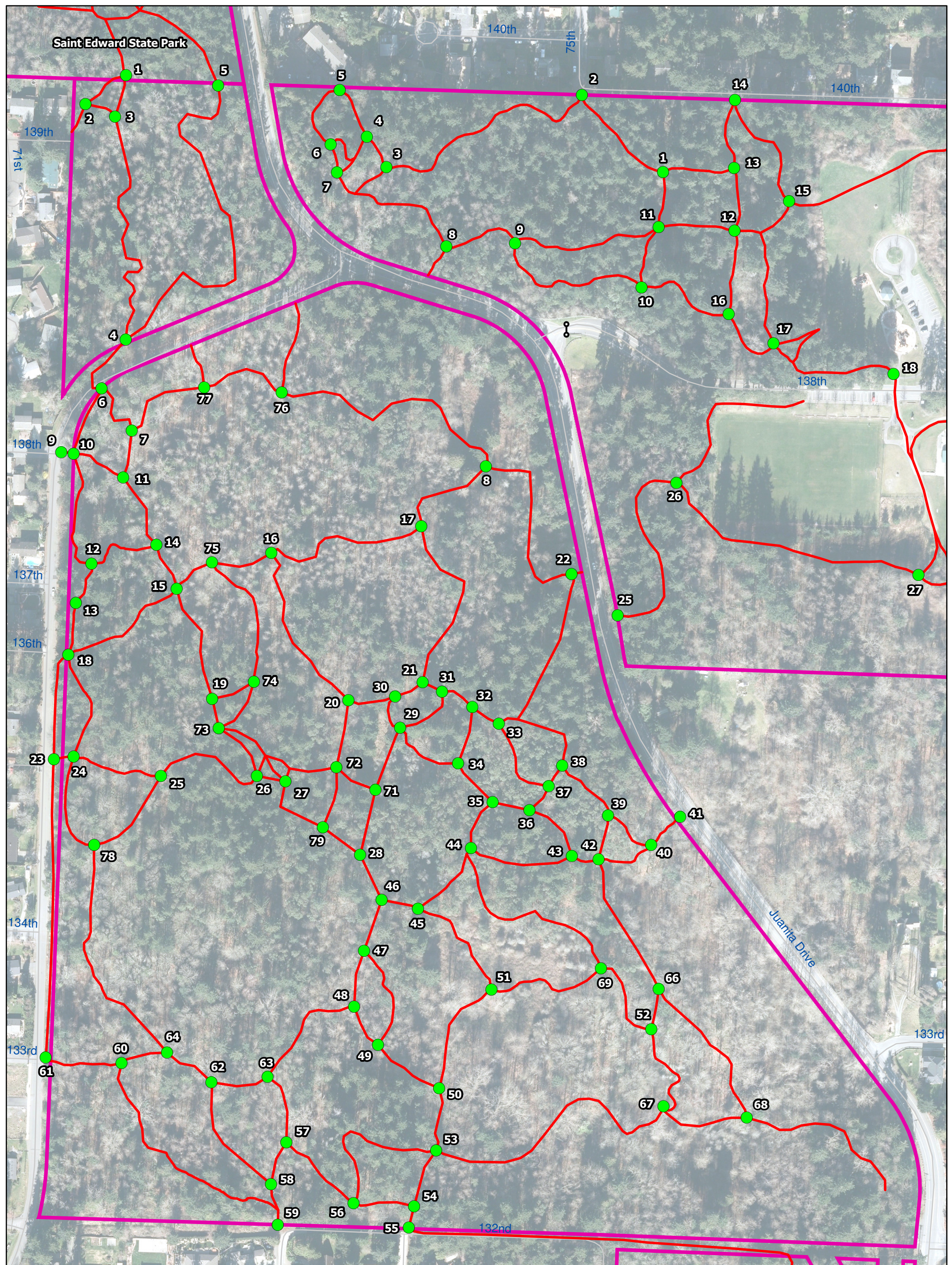


The information included on this map has been compiled by King County staff from a variety of sources and is subject to change without notice. King County makes no representations or warranties, express or implied, as to accuracy, completeness, timeliness, or rights to the use of such information. This document is not intended for use as a survey product. King County shall not be liable for any general, special, indirect, incidental, or consequential damages including, but not limited to, lost revenues or lost profits resulting from the use or misuse of the information contained on this map. Any sale of this map or information on this map is prohibited except by written permission of King County.





\\drp1\projects\Parks\working\projects\site\_projects\Big\_Finn\_Hill\_apps\volunteer\_trail\_data\_East\_proposed.mxd 5/28/2013


**Saint Edward State Park**





**Map 4: Big Finn Hill Park West  
Existing**

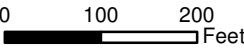
 Trail Intersections

 Gate

 Trails in King County

 King County Parks

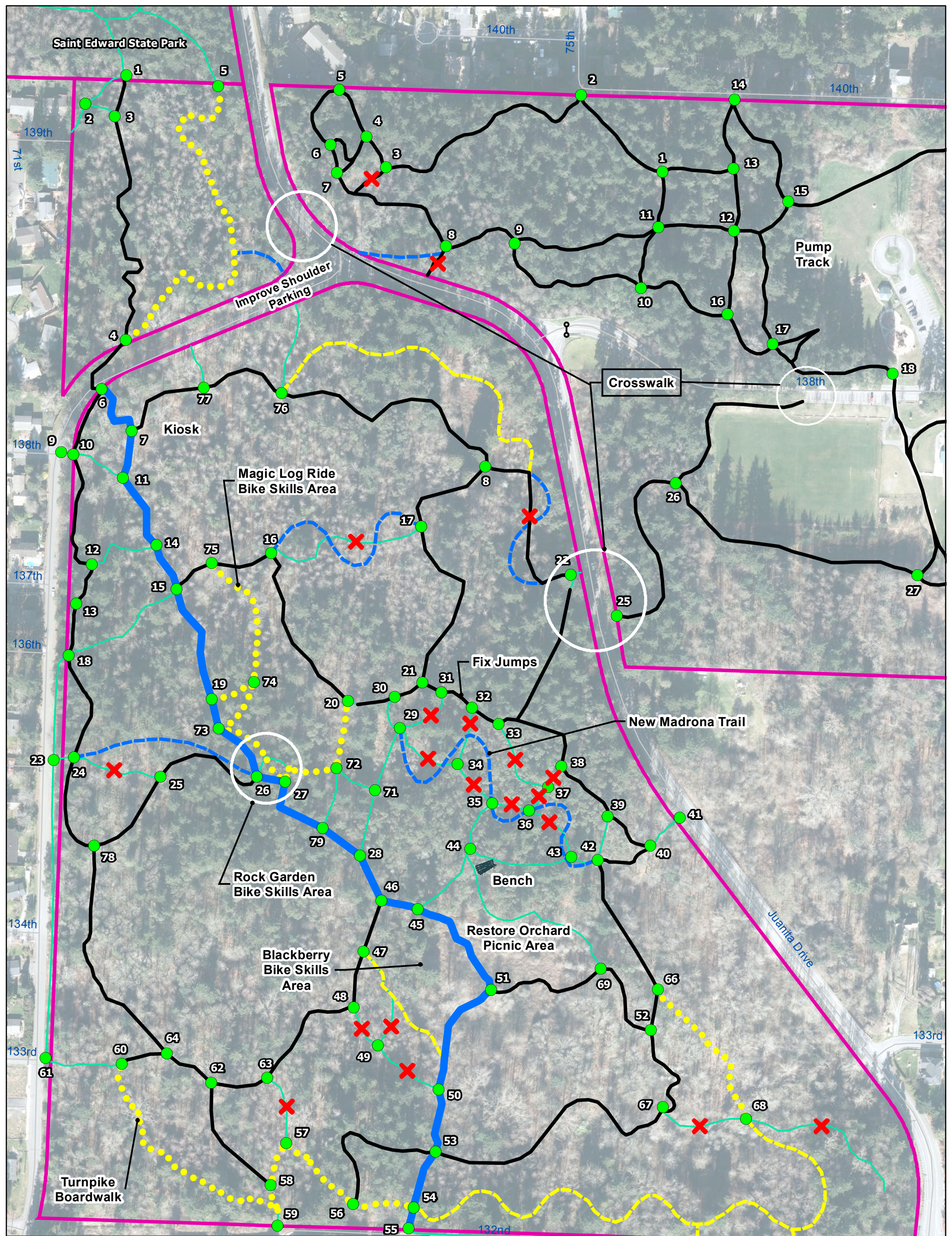




**King County**  
Department of  
Natural Resources and Parks  
**Parks Division**

The information included on this map has been compiled by King County staff from a variety of sources and is subject to change without notice. King County makes no representations or warranties, express or implied, as to accuracy, completeness, timeliness, or rights to the use of such information. This document is not intended for use as a survey product. King County shall not be liable for any general, special, indirect, incidental, or consequential damages including, but not limited to, lost revenues or lost profits resulting from the use or misuse of the information contained on this map. Any sale of this map or information on this map is prohibited except by written permission of King County.

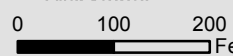
vdhnp1/projects/Parks/working/projects/s/e\_projects/Big\_Finn\_Hillapps/volunteer\_trail\_data\_West\_Port.mxd 5/13/2013



### Map 5: Big Finn Hill Park West Proposed

- Trail Intersections
- Gate
- ✗ Trails to be closed
- Existing shared use
- New shared use
- Existing shared use w/bike features
- Maintenance access trail
- Minor Trails
- King County Parks

**King County**  
 Department of Natural Resources and Parks  
 Parks Division



The information included on this map has been compiled by King County staff from a variety of sources and is subject to change without notice. King County makes no representations or warranties, express or implied, as to accuracy, completeness, timeliness, or rights to the use of such information. This document is not intended for use as a survey product. King County shall not be liable for any general, special, indirect, incidental, or consequential damages including, but not limited to, lost revenues or lost profits resulting from the use or misuse of the information contained on this map. Any sale of this map or information on this map is prohibited except by written permission of King County.

V:\nro1\projects\Park\working\projects\site\_projects\Big\_Finn\_Hill\apps\volunteer\_trail\_data\_West\_proposed.mxd 3/19/2014