

UW Bothell | Cascadia College STEM 4 Building Construction Bulletin



October 2022

UWB-Cascadia College
STEM 4 Project
18330 110th Ave NE
Bothell, WA 98011



Primary Contact:

Mark Sweeters,
Construction Manager
sweeters@uw.edu
(206) 391 6207

**Lease Crutcher Lewis
Project Team:**

Tony Kiehle, Superintendent
(206) 730 0242

Josh Van Kirk, Project Manager
(425) 681 8020

UW Project Delivery Group:

Shannon Thompson, Project
Manager thompsha@uw.edu
(360) 271 9207

This Community Bulletin is intended to serve as an update for upcoming work related to the Bothell STEM 4 project, as well as a means of notifying our campus community of any significant events that may impact the sidewalks and streets surrounding the project.

What is happening on the Bothell STEM4 Project?

The STEM4 building is taking shape. Exterior wall framing is complete, except areas left out for material staging. The Curtain wall has also started. Once complete, this will essentially dry-in the building allowing for the continuation of interior buildout and finishes.

The roof top mechanical screen steel has been erected and the masons have mobilized to site and have started setting brick at the SE corner of the building.



You may also notice from the above photo that the tower crane has been dismantled and removed. This is a big milestone for the project allowing the continuation of the building enclosure. The first two window water tests have been completed and passed with flying colors.



UW Bothell | Cascadia College STEM 4 Building Construction Bulletin

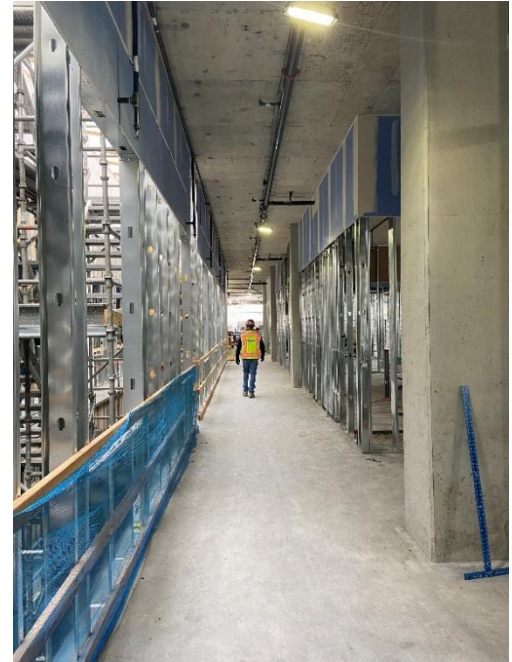
LEASE CRUTCHER
Lewis

MITHŪN

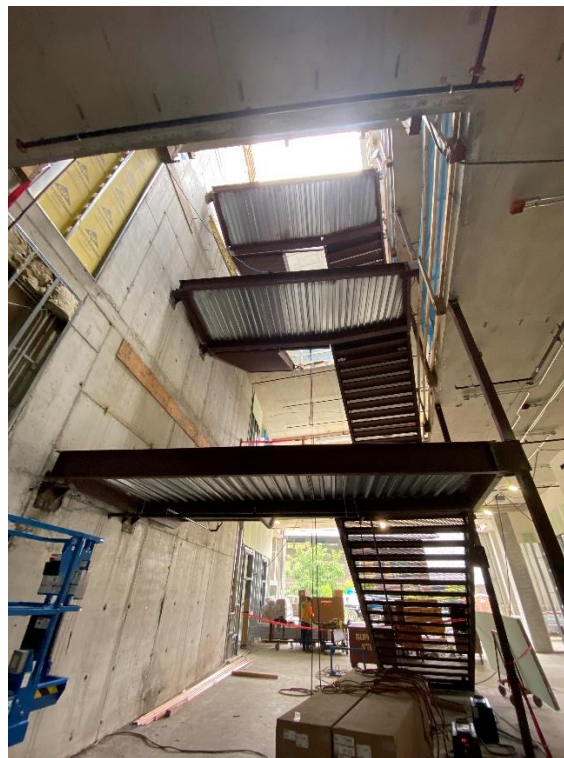
CASCADIA
COLLEGE
BOTHELL

W
BOTHELL

Interior wall framing continues on all levels, along with door frames, supporting the installation of MEP rough-in throughout. Painting has been completed in some priority rooms.



The East Main Stair has been erected and concrete treads have been placed.



UW Bothell | Cascadia College STEM 4 Building Construction Bulletin

LEASE CRUTCHER
Lewis

MITHŪN

CASCADIA
COLLEGE
BOTHELL

W
BOTHELL

The stormwater retention pond on the North Creek trail has been completed and planted. This will take the storm drainage runoff for the completed project and provide additional capacity for the campus.

